

Waseca Lakes Association

NEWSLETTER

Web Site: wasecalakes.org



Fall 2022 Edition

Upcoming Events

WLA Monthly Meeting (East Annex).....November 2nd, 2022 @ 7am

The Waseca Lakes Association Goals and Focus for 2022 and Beyond

- **AIS- Aquatic Invasive Species** (Weed harvester and herbicide treatment)
- **Internal Loading** (Lower internal lake phosphorous, aeration, Alum treatments)
- **External Loading** (Lower phosphorus entering from Gaiter Lake, storm water, City waste, other inlets)
- **Shoreline Restorations & Lake Plantings** (Public & private landowners)
- **Public Education** (Awareness for all lake users, landowner roles & responsibility)

Secchi Disk

The WLA monitors Clear Lake each year and this information is sent to the respective agencies.

Water clarity is recorded through the MN Pollution Control Agency Citizen Lake Monitoring Program using a Secchi disk.

2022 Monthly Secchi Readings				
	1st	2nd	3rd	4th
April	11.0			
May	11.0	10.5	11.0	11.0
June	11.0	6.0	6.0	5.0
July	4.0	3.5	2.5	2.5
August	2.5	2.0	2.0	
September	2.5	3.5	3.5	
October	4.0	4.5		

PRESIDENT UPDATE

The Waseca Lakes Association Board has had a very busy, productive and exciting year! We've been building membership, which is at an all time high, planning, and collaborating with our partners to improve Waseca area lakes.

The year began with the return of our lakeshore cleanup day in April, where despite the weather, we had a great turnout which allowed us to clean up all the areas of the city. Then in May the county began the first year of curly-leaf pondweed harvesting on Clear Lake. This was followed by a full lake Fluridone treatment to help control Eurasian watermilfoil. Early indications are that these are having a positive impact on the invasive species population, which is allowing the native plant population to prosper. In partnership with the City of Waseca we launched an adopt-a-drain program. In September, with the support of the Waseca Area Foundation, we launched a floating island in Clear Lake.

We know there is a lot more work to do and are already discussing what's next. This year saw a strong commitment to invasive species, and we will certainly need to continue our focus on them to keep them under control. However, we also know that we need to begin to focus on external loading issues that impact our lakes. We are discussing shoreline restorations, native plantings, addressing storm water run-off, additional floating islands, public outreach and education, and more.

I am blessed to work with a dedicated board. I also know none of this would be possible without the support of our members. In addition, we owe a HUGE THANK YOU to Waseca City Engineer Nathan Willey, Waseca County Commissioners, Waseca County Public Works Staff, and County Administrator Michael Johnson for their dedication and support of the lakes.

We truly appreciate all the support this last year and look forward to continuing our mission of improving area water quality. If you have feedback, questions or concerns please feel free to contact me at wasecalakes@gmail.com or at 507-461-2604

If you know individuals interested in joining the WLA they can visit us at www.wasecalakes.org.

President Trevor Kanewischer

INVASIVE SPECIES UPDATE

As you likely know, there was a major effort this year to manage curly-leaf pondweed and Eurasian watermilfoil which are invasive weeds that contribute to poor water quality including reduced clarity, recreation, and navigation in Clear Lake.

Curly-leaf pondweed (CLP):

Waseca County took the lead by purchasing and operating the aquatic weed harvester that treated 75 acres, removing 220 tons of CLP early in the season preventing seed (turion) production. Continued plant removal in future years will reduce CLP by reducing the seed bank in Clear Lake.

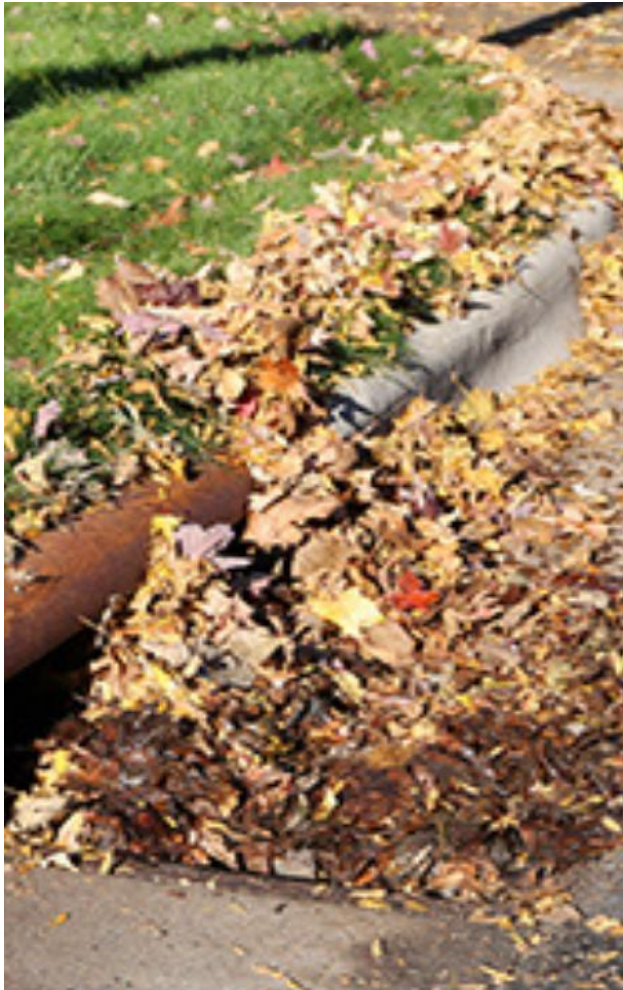
Eurasian watermilfoil (EWM):

The WLA was successfully awarded a new infestation and innovative grant from the MN DNR to target EWM with a unique whole lake treatment. Treating all 640 acres is very expensive, but with additional financial contributions from Waseca County and the city of Waseca, we were able to contract with PLM Land and Water Management and made the first application in June. An additional application was made in July and water samples were taken every 1-2 weeks by WLA member Tom Glaser for a period of 90 days to assure we were maintaining a prescribed low dose concentration.

An early assessment by the DNR in July looked very promising with EWM plants dying and desired native plants thriving. In September, WLA members Tom Glaser and Duane Rathmann assisted DNR AIS specialist Carli Wagner with a whole lake weed survey. The survey found no EWM but did find 5 species of desired native weeds around the lake. We also found several germinating CLP plants which begin to grow in fall and will be seen early in 2023.

We are eager to see what next year brings but all indications show a very good control of EWM and a reduction in CLP. We hope these efforts will help to reset these invasive weed populations to levels that we can effectively manage each year as necessary.

RAKE FOR THE LAKE



WAYS TO KEEP OUR LAKES CLEAN

Rake for leaf-free streets: Studies show leaves account for nearly 50% of phosphors in lakes. When left in the street, stormwater passes through leaves like a teabag and brings the phosphorus with it. Raking leaves from the street edge (three feet from the curb) and onto lawns will help fertilize the grass and reduce algae blooms in our lakes.



ADOPT-A-DRAIN

You are probably familiar with the Adopt-a-Highway program, where volunteers commit to picking up trash along a stretch of highway twice a year.

That same concept is now being applied to storm drains, which carry rain and runoff water along with leaves, gravel, garbage and other debris directly to rivers and lakes. The WLA is excited to have partnered with the City of Waseca to bring the Adopt-a-Drain program to Waseca!

Adopt-a-Drain asks residents to volunteer 10-15 minutes, twice a month, to adopt a storm drain in their neighborhood and keep it clear of leaves, trash, and other debris to reduce water pollution.

You can adopt your drain by visiting <https://mn.adopt-a-drain.org/>

ADOPT
A STORM
DRAIN



FLOATING ISLAND

The Waseca Lakes Association was awarded a grant from the Waseca Area Foundation this spring for the purchase and installation of a vegetative floating island. These man-made islands create a sustainable ecosystem for better water quality and a diverse habitat for pollinators, wildlife, and fish. The islands are covered with plants that grow roots below the islands. They help manage phosphorus, nitrogen, heavy metals, and total suspended solids (TSS) for cleaner water.

The island has now been planted and installed in the bay by The Boathouse and Methodist church. There currently is a fence installed on it to prevent the geese from nesting, but the turtles have already taken a liking to it! The following native plants are planted on the island:

- Swamp Milkweed
- Ironweed
- Cardinal Flower
- New England Aster
- Common Rush
- Sweet Flag
- Fox Sedge
- Monkey Flower
- Soft-stem Bulrush



SPONSORS

The success we have had this year could not have been achieved with out the support of our Waseca Lakes Association members, Waseca County, City of Waseca, the MN DNR and our many local businesses. Please take time to thank all who supported the Waseca Lakes Association in 2022.



THYME ON MAIN

